



Tennis Street, London, SE1

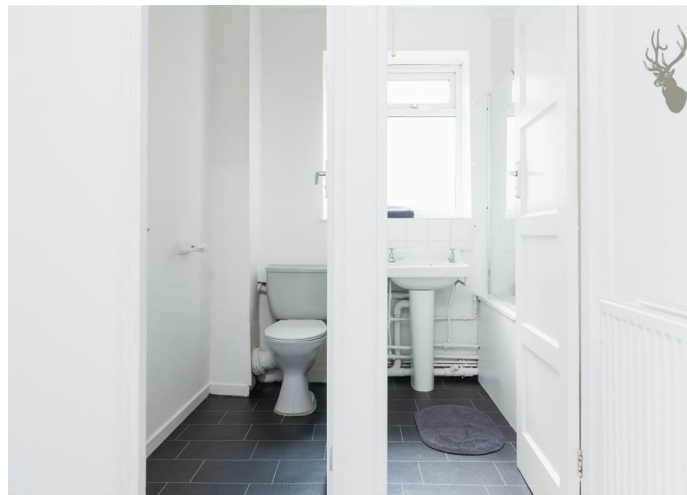
BUTLER & STAG



Fantastic large double bedroom located in close proximity to Borough Market and underground station.



- Large Double Bedroom
- Fully Furnished
- Broadband Included
- Fantastic Location
- Some Bills Included
- Available 11th September

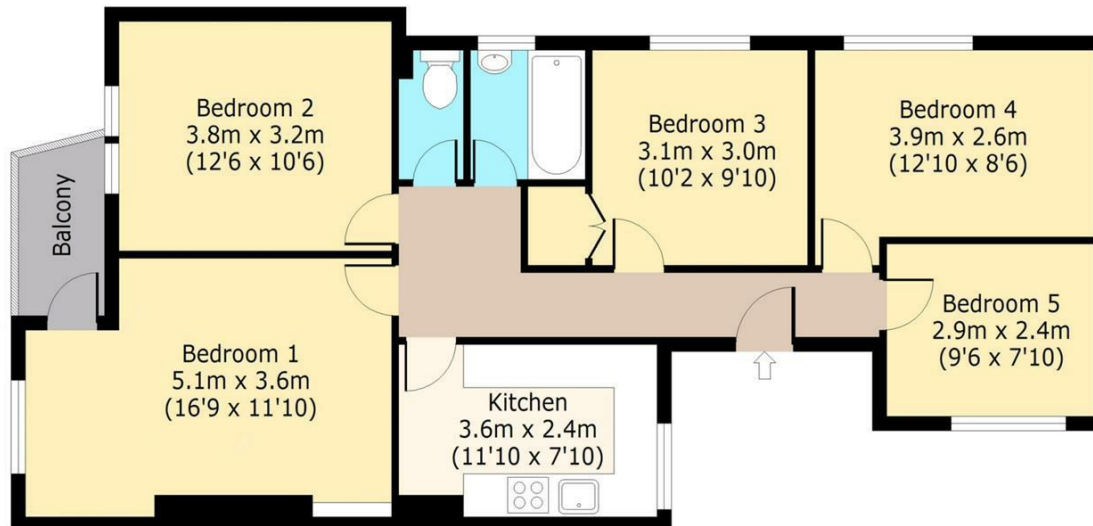




Brenley House, SE1

Fourth Floor

Approx. 82 Sq. meters (872 Sq. feet)



Total area: approx. 81 Sq. meters (872 Sq. feet)

For illustration purposes only - not to scale

www.londonpropertyassessments.co.uk

IMPORTANT NOTICE - These particulars have been prepared in good faith and they are not intended to constitute part of an offer or contract. We have not performed a structural survey on this property and the services, appliances and specific fittings have not been tested. All photographs, measurements, floor plans and distances referred to are given as a guide and should not be relied upon.

BUTLER & STAG

☎ 020 8102 1236

🏠 508 Roman Road, Bow, London, E3 5LU

✉ bow@butlerandstag.com

www.butlerandstag.uk